



Lg. Elongated Hex C228

FIELD TILE OPTIONS



2x4 Rustic Field W63

Pratt & Larson field tile is available in a wide variety of sizes, shapes and surfaces.

Any field tile may be ordered in any surface, in any of our gorgeous glazes!

Our unique selection of surface options bring out the best qualities in all of our glazes. Please specify your surface choice when ordering by using the following codes: Smooth (PF), Rustic (RU), Portland (PB) or Textures (TF). Change the surface by selecting the specific two letter code for the surface you want. Please order current color samples to see how the different surfaces accentuate and change the appearance and depth of our glazes. Handmade tile will vary in shade, color and surface.

Smooth (PF)

Smooth field tile has a smooth surface and smooth edges. R Gloss, Parchment Matte and Satin glazes all look classically beautiful on our smooth field. SBN and SBNDA are available for smooth squares and rectangles. Mosaic patterns are produced on smooth tile.

Rustic (RU)

Rustic field has a smooth edge but a slightly mottled, textured surface which allows for glaze pooling and enhances glaze variation. Watercolor and Craftsman glazes truly come to life when ordered on rustic field tile. SBN and SBNDA are available for rustic squares and rectangles.

Portland (PB)

The surface and edge of Portland tile reveal the unique markings acquired through our handmade process. Portland surface markings can appear either subtle or pronounced, depending on the glaze you select. The Portland edge is crisp yet has an organic feel. Glazes break differently along this slightly rustic edge, creating a unique effect. SBN is not available for any Portland Field, we recommend using our Mini Quarter Round as a finishing edge.

Textures (TF)

Add depth, richness and interest to any installation by incorporating any of our unique textures onto your field tile. Textures can appear either subtle or pronounced, depending on the glaze and color chosen. Using Watercolors will allow for more pooling and transparency, while using opaque, matte Craftsman glazes will create a subtle, overall textural surface. Directional or lineal texture orientation will vary on shapes. Please order samples to see how the different textures align on our shapes. An upcharge may be applied when ordering textures on some of our shapes. SBN is not available for textured field, we recommend using our Mini Quarter Round as a finishing edge.

FIELD SIZES + SHAPES

Please specify your surface choice when ordering by changing the two letter prefix: Smooth (PF), Rustic (RU), Portland (PB) or Textures (TF). Chart below contains PF-Smooth Field Codes.

SQUARES

Size	Code	Tiles/SF
3X3	PF-33XX	16
4X4	PF-44XX	9.5
4 ^{1/4} x4 ^{1/4}	PF-4QXX	8
5X5	PF-55XX	5.7
6X6	PF-66XX	4
8X8	PF-88XX	2.4

RECTANGLES

Size	Code	Tiles/SF
2x4	PF-24XX	18
2 ^{1/2} x5	PF-255X	11.5
2X6	PF-26XX	12
2X8	PF-28XX	9.5
3x4	PF-34XX	12
3X6	PF-36XX	8
3x8	PF-38XX	6
3X12	PF-312X	4
4X6	PF-46XX	6
4X8	PF-48XX	4.9
4X10	PF-410X	3.6
4X12	PF-412X	3
5X10	PF-510X	2.9
6x10	PF-610X	2.4
6X12	PF-612X	2

SHAPES*

Size	Code	Tiles/ SF
5" Diamond	PF-DIA5	24
3" Hexagon	PF-HEX3	16
5" Hexagon	PF-HEX5	8.3
8" Hexagon	PF-HEX8	3.4
4" Octagon w. 1" dot	PF-OD41	9.5
6" Octagon (w/dot)	PF-OD61	4
	PF-OD62	
8" Octagon (w/dot)	PF-OD83	2.3
	PF-OD84	
4" Rhomboid	PF-ROM4	13.7
Large Arabesque	PF-ARLG	8
Sm. Elongated Hex	PF-EHSM	13.5
Lg. Elongated Hex	PF-EHLG	4.8
Sm. Elongated Ogee	PF-EOSM	11.2
Lg. Elongated Ogee	PF-EOLG	6.5
Lg. Elongated Fan	PF-EFLG	6.8
Elongated Crescent	PF-ECRE	12
Large Lantern	PF-LALG	8
Square Lantern	PF-SLLG	8.5
Lg. Scalloped Fan	PF-SFLG	8
Facet	PF-FACE	17
Hourglass	PF-HRGL	9
Large Fan	PF-FNLG	9
Chevron	PF-CHVR/L	10
4" Equilateral Triangle	PF-ETR4	21
6" Equilateral Triangle	PF-ETR6	8.4
Small Picket	PF-PKSM	13.5
Large Picket	PF-PKLG	4.9

* SBN and SBND are available on smooth and rustic squares and rectangles only. We recommend using the Mini Quarter Round as a finishing edge for shapes as well as Portland and Textured Field.

* An upcharge may be applied when ordering textures on shapes

All sizes are nominal. Pratt & Larson field tile is 3/8" thick.

PORTLAND FIELD (PB)



Large Picket Portland Field UWM

The surface and edge of Portland field tile reveal the unique markings acquired through the handmade process. These characteristic traits are what make Portland field so appealing and beautiful.

Portland surface markings can appear either subtle or more pronounced, depending on the glaze you select. Using Watercolors will allow for more transparency, while using opaque, matte glazes will conceal more of the surface marks. The Portland edge is crisp yet has an organic feel. Glazes break differently along this slightly rustic edge, creating a unique effect.

Portland Field can be installed with a slightly tighter grout joint for a more modern, Zellige style look.

Any of our flat field tile (squares, rectangles or shapes) can be ordered as Portland field in any of our monochrome glazes.

Portland Field is handmade and will vary from tile to tile. We recommend ordering current color samples to see the full range of both surface and color. SBN is not available in Portland Field.

PORTLAND FIELD



G1-117 Portland Lg. Elongated Hex-R15



G1-118 Portland 3x12- P146



G1-113 Portland Lg. Fan- W97



G1-122 Portland 5" Hex- C340

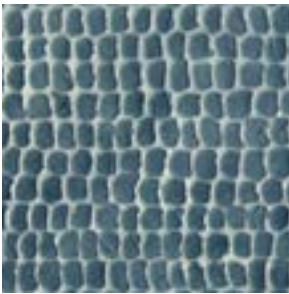
TEXTURED FIELD (TF)



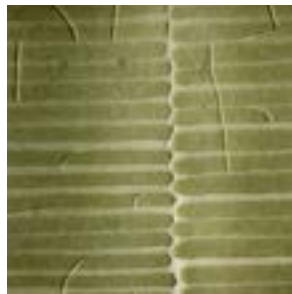
2x8 Texture B W93

TEXTURED FIELD

Add depth, richness and interest to any installation by incorporating any of our unique textures onto your field tile. Textures can appear either subtle or pronounced, depending on the glaze and color chosen. Using Watercolors will allow for more pooling and transparency, while using opaque, matte Craftsman glazes will create a subtle, overall textural surface. Textures, like glazes will vary in production. We recommend ordering current color samples to see the range of both texture and color. Directional or lineal texture orientation will vary on shapes. Please order samples to see how the different textures align on our shapes. An upcharge may be applied when ordering textures on some of our shapes. SBN is not available for textured field, we recommend using our Mini Quarter Round as a finishing edge.



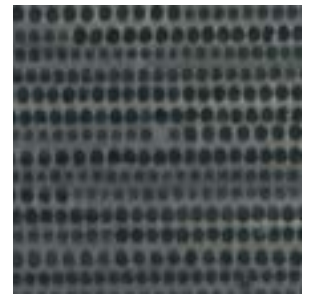
TEXTURE A



TEXTURE B



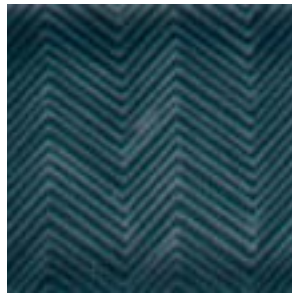
TEXTURE C



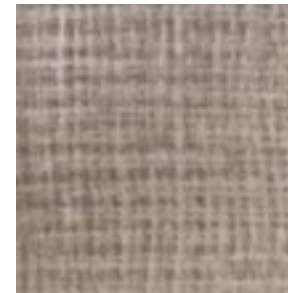
TEXTURE D



TEXTURE G



TEXTURE H



TEXTURE K



TEXTURE L



TEXTURE M



TEXTURE N



TEXTURE S

TEXTURED FIELD (TF) CODES

RECTANGLES

Size	Code	Description	PC/SF
2x4	TF-24X_	2x4 Texture _ Field	18
2 ^{1/2} x5	TF-255_	2 ^{1/2} x5 Texture _ Field	11.5
2X6	TF-26X_	2X6 Texture _ Field	12
2X8	TF-28X_	2x8 Texture _ Field	9.5
3x4	TF-34X_	3x4 Texture _ Field	12
3X6	TF-36X_	3x6 Texture _ Field	8
3x8	TF-38X_	3x8 Texture _ Field	6
3X12	TF-312_	3x12 Texture _ Field	4
4X6	TF-46X_	4x6 Texture _ Field	6
4X8	TF-48X_	2x4 Texture _ Field	4.9
4X10	TF-410_	4x10 Texture _ Field	3.6
4X12	TF-412_	4x12 Texture _ Field	3
5X10	TF-510_	5x10 Texture _ Field	2.9
6x10	TF-610_	6x10 Texture _ Field	2.4
6X12	TF-612_	6x12 Texture _ Field	2

SQUARES

Size	Code	Description	PC/SF
3X3	TF-33X_	3x3 Texture _ Field	16
4X4	TF-44X_	4x4 Texture _ Field	9.5
4 ^{1/4} x4 ^{1/4}	TF-4QX_	4 ^{1/4} x4 ^{1/4} Texture _ Field	8
5X5	TF-55X_	5x5 Texture _ Field	5.7
6X6	TF-66X_	6x6 Texture _ Field	4
8X8	TF-88X_	8x8 Texture _ Field	2.4

SHAPES

Code	Description	PC/SF
TF-ARLG_	Large Arabesque Texture _	8
TF-EOLG_	Lg. Elongated Ogee Texture _	6.5
TF-EHLG_	Lg. Elongated Hex Texture _	4.8
TF-HEX5_	5" Hexagon Texture _	8.3

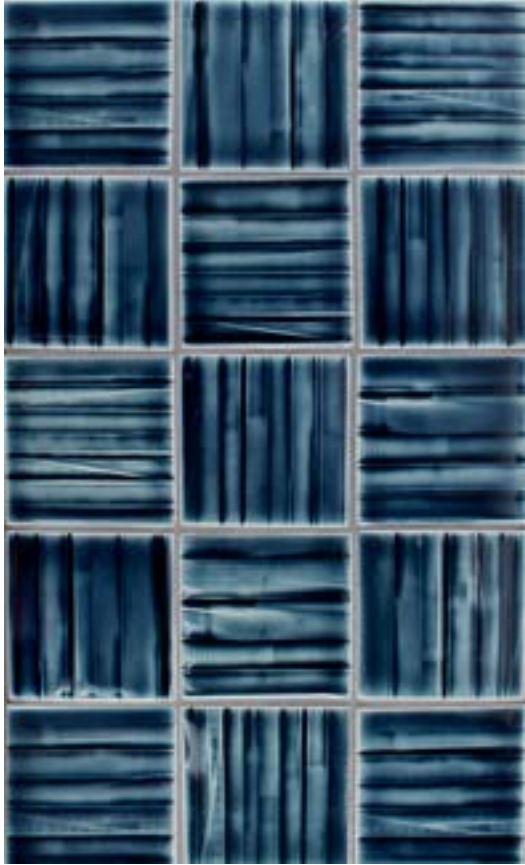
When ordering Textured Field use the **TF-** code prefix, size info (see above chart) followed by the Texture letter. For example, use the code **TF-48XS** when ordering 4x8 Field in Texture **S**.

All squares, rectangles and shapes listed above may be ordered in any of our 11 textures at standard field pricing.

Directional or lineal texture orientation will vary on shapes, please order samples to see how the various textures align on our shapes.

SBN and SBND are not available on Textured Field. We recommend using a Mini Quarter Round as a finishing edge.

All sizes are nominal. Pratt & Larson field tile is 3/8" thick.



G2-165 Texture L W96



G2-127 Texture C, H, K W82, W89, W96



G2-127 Texture D, S, Smooth W67



G2-168 Texture M W97



G2-134 Texture C, K W60, W62, W66



G2-135 Texture B R354

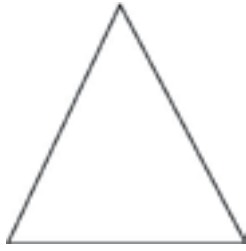


G2-136 Texture C, G, K W87

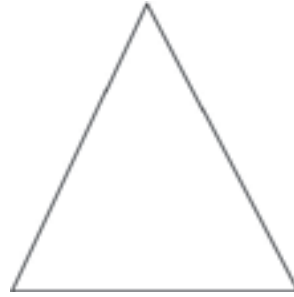


G2-137 Texture A, C, G, K C86, C603

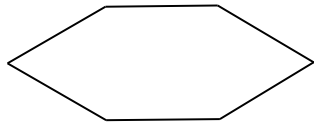
FIELD SHAPES



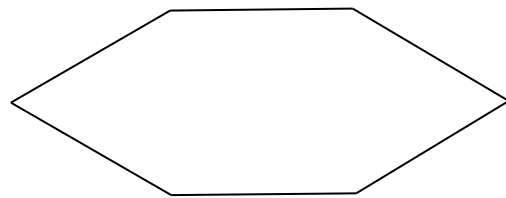
PF-ETSM 4" Equilateral Triangle 21 pc/SF



PF-ETLG 6" Equilateral Triangle 8.4 pc/SF



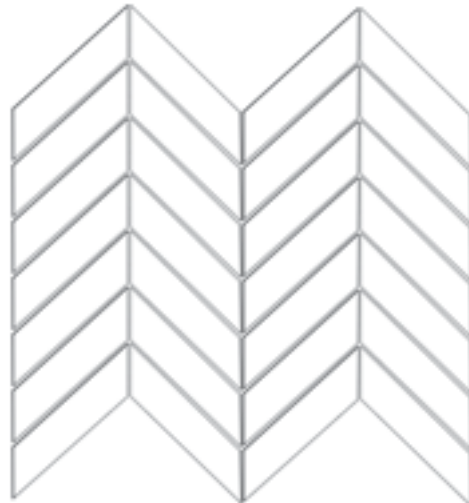
PF-PKSM Small Picket 13.5 pc/SF



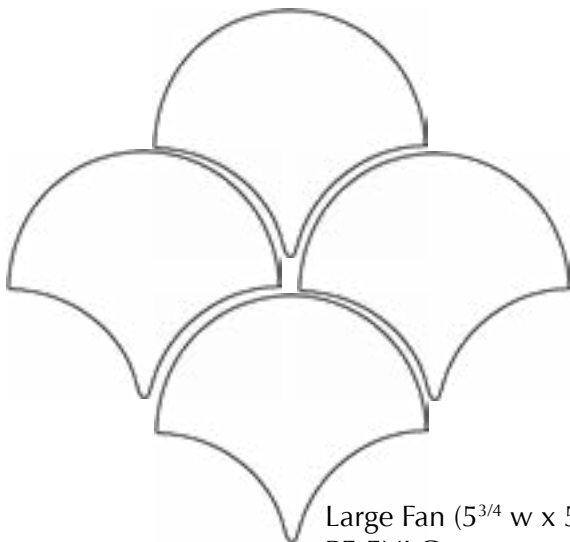
PF-PKLG Large Picket 4.9 pc/SF



PF-HEX8 8" Hex
3.4 pc/SF



Chevron Field ($9\frac{1}{4}$ w x $1\frac{7}{8}$ h) 10 pc/SF
PF-CHVR Right/PF-CHVL Left

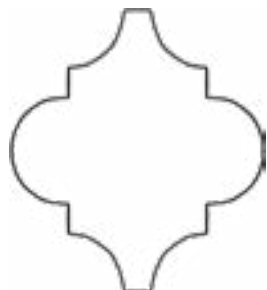


Large Fan ($5\frac{3}{4}$ w x $5\frac{1}{4}$ h) 9 pc/SF
PF-FNLG



PF-HEX5 5" Hex*
8.3 pc/SF

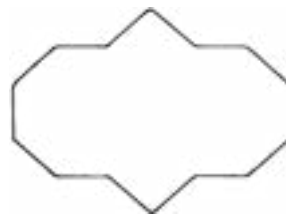
FIELD SHAPES



PF-ARLG*
Lg. Arabesque
(5.88 x 5.38) 8 pc/sf



PF-LALG
Lantern
(5.25 x 5.88) 8 pc/sf



PF-SLLG
Square Lantern
(4.25 x 5.88) 8.5 pc/sf



PF-SFLG
Large Scalloped Fan
(5.5 x 5.75) 8 pc/sf



Hourglass
PF-HRGL
(4 x 6) 9 pc/sf



Facet
PF-FACE
(5.13 x 3.13)
17 pc/sf



Elongated Crescent
PF-ECRE
(5.25 x 2.88)
12 pc/sf



PF-EHSM
Sm. Elongated Hex
(5.4 x 2.4)
13.5 pc/sf



PF-ROM4
4" Rhomboid
13.7 pc/sf



PF-EOLG*
Lg. Elongated Ogee
(11.8 x 2.8) 6.5 pc/sf



PF-EOSM
Sm. Elongated Ogee
(8.9 x 2.1) 11.13 pc/sf



PF-EHLG*
Lg. Elongated Hex
(11 x 3.4) 4.75 pc/sf



Large Elongated Fan
PF-EFLG
(7.13 x 3.75) 6.75 pc/sf



G1-74 Smooth Facet R15, P505, W5, W95



G1-33 Smooth Elongated Ogee W7



G1-78 Smooth Large Elongated Fan W96, W67



G1-67 4" Smooth Rhomboid P505, R342, R354



Smooth Facet R147, R56, R94, C35, C228



Smooth Large Fan R44