



PRATT + LARSON



TEXTURES



TEXTURES

Add depth, richness and interest to any installation by incorporating any of our unique textures onto your field tile. Textures can appear either subtle or pronounced, depending on the glaze and color chosen. Using Watercolors will allow for more pooling and transparency, while using opaque, matte Craftsman glazes will create a subtle, overall textural surface. Textures, like glazes will vary in production. We recommend ordering current color samples to see the range of both texture and color. Directional or lineal texture orientation will vary on shapes. Please order samples to see how the different textures align on our shapes. An upcharge may be applied when ordering textures on some of our shapes. SBN is not available for textured field, we recommend using our Mini Quarter Round as a finishing edge.



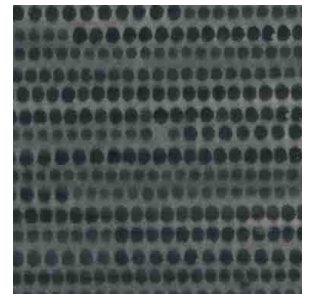
TEXTURE A



TEXTURE B



TEXTURE C



TEXTURE D



TEXTURE G



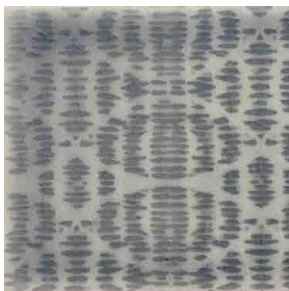
TEXTURE H



TEXTURE K



TEXTURE L



TEXTURE M



TEXTURE N



TEXTURE S

TEXTURE FIELD (TF) CODES

RECTANGLES

Size	Code	Description	PC/SF
2x4	TF-24X_	2x4 Texture _ Field	18
2 ^{1/2} x5	TF-255_	2 ^{1/2} x5 Texture _ Field	11.5
2X6	TF-26X_	2X6 Texture _ Field	12
2X8	TF-28X_	2x8 Texture _ Field	9.5
3x4	TF-34X_	3x4 Texture _ Field	12
3X6	TF-36X_	3x6 Texture _ Field	8
3x8	TF-38X_	3x8 Texture _ Field	6
3X12	TF-312_	3x12 Texture _ Field	4
4X6	TF-46X_	4x6 Texture _ Field	6
4X8	TF-48X_	2x4 Texture _ Field	4.9
4X10	TF-410_	4x10 Texture _ Field	3.6
4X12	TF-412_	4x12 Texture _ Field	3
5X10	TF-510_	5x10 Texture _ Field	2.9
6x10	TF-610_	6x10 Texture _ Field	2.4
6X12	TF-612_	6x12 Texture _ Field	2

SQUARES

Size	Code	Description	PC/SF
3X3	TF-33X_	3x3 Texture _ Field	16
4X4	TF-44X_	4x4 Texture _ Field	9.5
4 ^{1/4} x4 ^{1/4}	TF-4QX_	4 ^{1/4} x4 ^{1/4} Texture _ Field	8
5X5	TF-55X_	5x5 Texture _ Field	5.7
6X6	TF-66X_	6x6 Texture _ Field	4
8X8	TF-88X_	8x8 Texture _ Field	2.4

SHAPES

Code	Description	PC/SF
TF-ARLG_	Large Arabesque Texture _	8
TF-EOLG_	Lg. Elongated Ogee Texture _	6.5
TF-EHLG_	Lg. Elongated Hex Texture _	4.8
TF-HEX5_	5" Hexagon Texture _	8.3

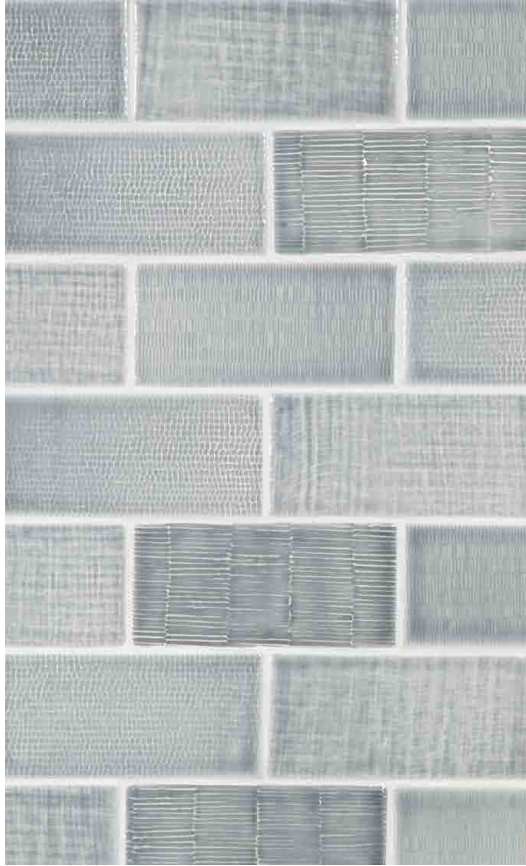
When ordering Textured Field use the **TF-** code prefix, size info (see above chart) followed by the Texture letter. For example, use the code **TF-48XS** when ordering 4x8 Field in Texture **S**.

All squares, rectangles and shapes listed above may be ordered in any of our 11 textures at standard field pricing. Other shapes available at an upcharge.

Directional or lineal texture orientation will vary on shapes, please order samples to see how the various textures align on our shapes.

SBN and SBND are not available on Textured Field. We recommend using a Mini Quarter Round as a finishing edge.

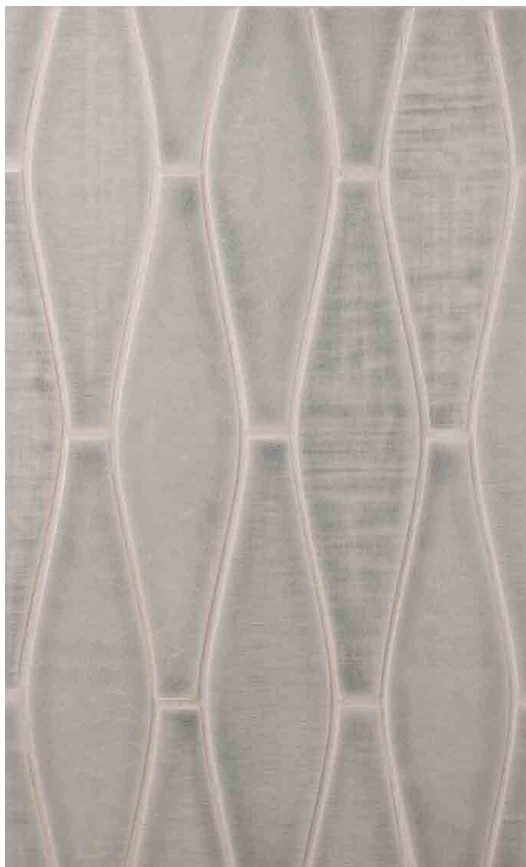
All sizes are nominal. Pratt & Larson field tile is 3/8" thick.



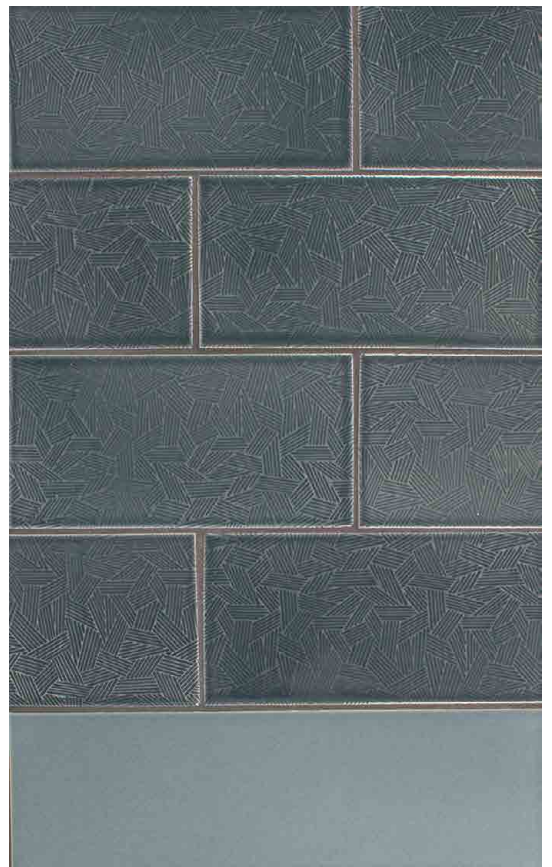
G2-99 Texture A, B, C, K W93



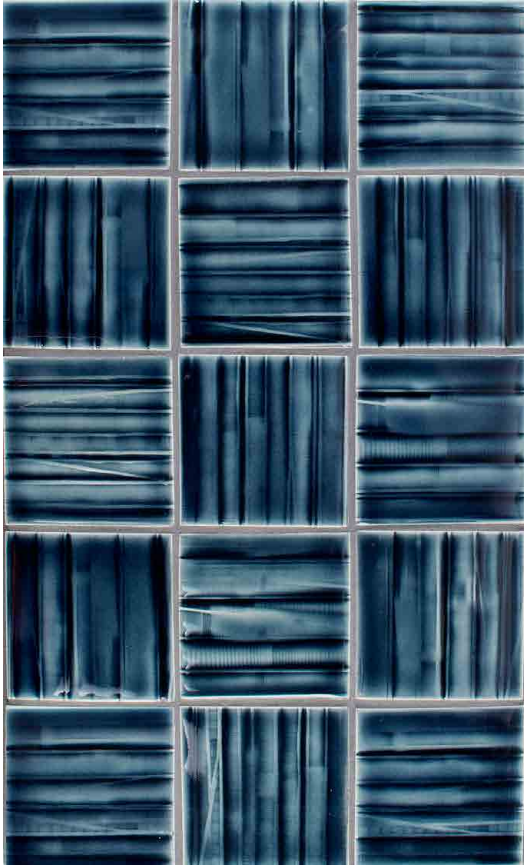
G2-92 Texture B W7, W86, W88



G2-136 Texture C, G, K W87



G2-126 Texture G R354, C330



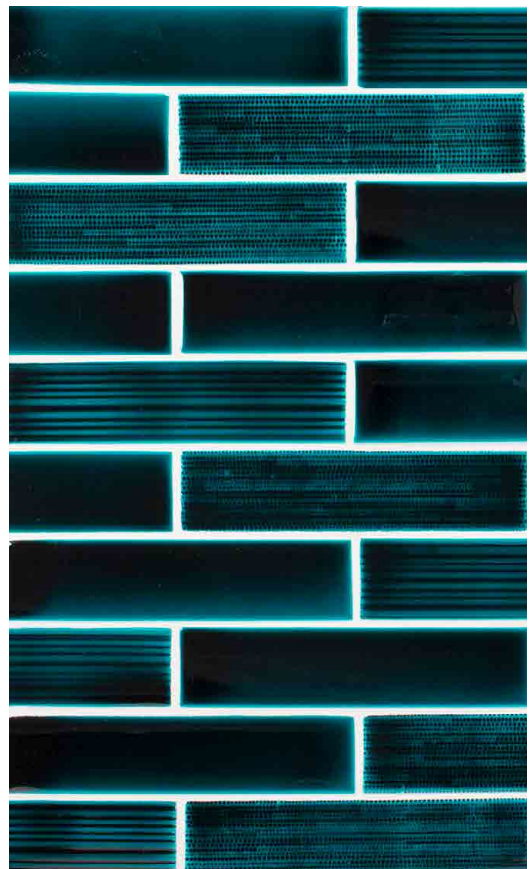
G2-165 Texture L W96



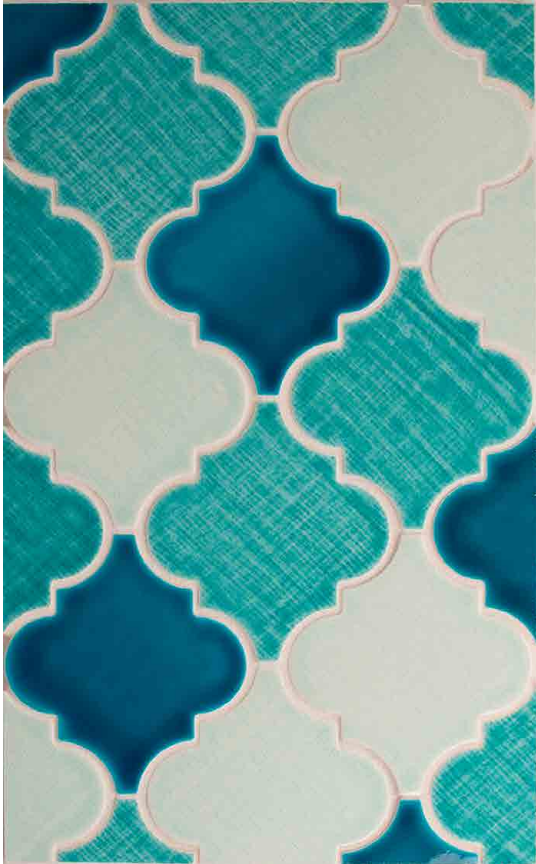
G2-127 Texture C, H, K W82, W89, W96



G2-164 Texture M W98



G2-127 Texture D, S, Smooth W67



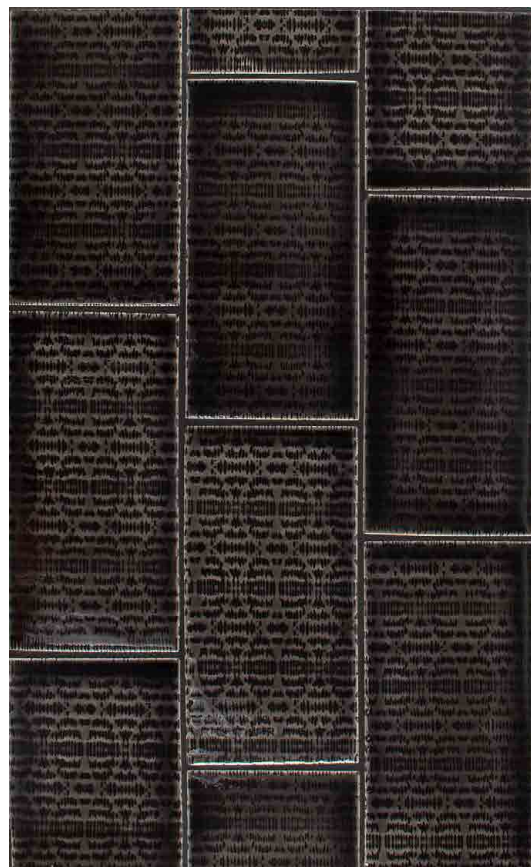
G2-134 Texture C, K W60, W62, W66



G2-135 Texture B R354



G2-137 Texture A, C, G, K C86, C603



G2-168 Texture M W97



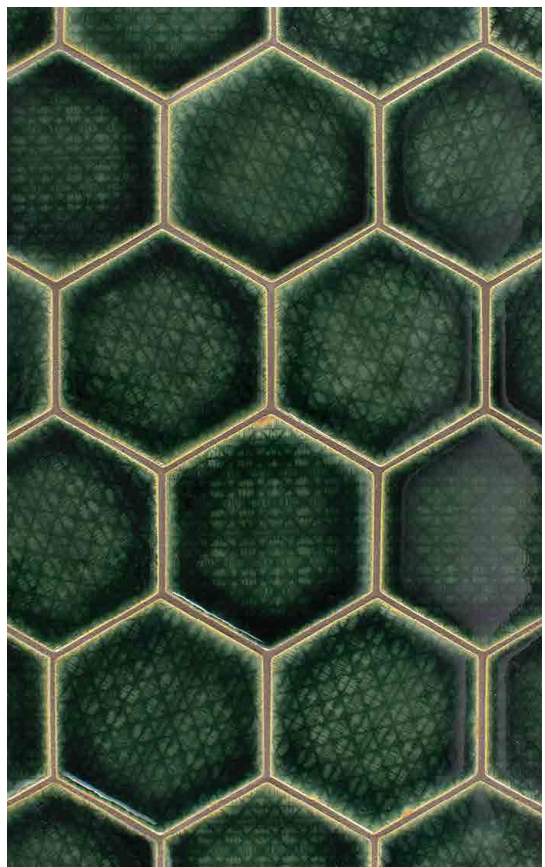
G2-122 Textures G, H S9, W74



G2-124 Texture G, H S10, W79, W76, W77



G2-166 Texture L W77



G2-165 Texture N W55



PRATT + LARSON

